



RISHIKUL WORLD ACADEMY
Sonepat, Haryana

P R O S P E C T U S



Founder Patron's Message

Dear Students, Parents and Teachers

It gives me immense pleasure to welcome you to the portals of this newest temple of learning. What was just a piece of land a little while ago is now a buzzing, bustling centre of learning, thanks to you all.

It is yours; you make it and you will take it to the pinnacles of glory through your diligence, learning and wisdom.

What a blessed and holy land it is where this new sapling of learning has taken root! With proper nurture and care it will soon transform into a giant and robust banyan under whose shade thousands and thousands of pupils will receive best possible education with utmost care and compassion.

As the modern day avatar of the ancient schools set up by sages, rishikul World Academy will have the latest, world-class facilities and infrastructure but the atmosphere here will be imbued with the age-old traditions, values and ethics of those Indian schools of yore.

I take this opportunity to share with you a secret to success. It lies in the magic number of 432! Here, the number 4 stands for the 4 D's—Duty, Devotion, Discipline and Determination. This mantra will guide you in achieving anything you aspire for in life. The number 3 symbolises Prayer, Piety and Parents. These 3 P's will always protect you from any harm or danger. And finally, the number 2 represents 2 G's—Gyan and the Guru. The first one is impossible to attain without the second one!

I take this opportunity to congratulate the rWA team on this noble initiative and extend to them all possible help and guidance.

Best wishes and blessings!

sincerely

Shri Krishan Sharma



Chairman's Message

Dear Students, Parents and Teachers

rishikul World Academy is a dream come true for me and we are grateful to God and our Founder Patron shri s K sharma for their blessings and guidance in the realization of this dream.

When education is offered by a group of educationists, people's expectations are naturally very high. They expect quality, they expect values and they expect worth. At rWA, we will make our sincerest efforts to meet all the expectations of our pupils. We will share their dreams, we will walk with them on their chosen path to success and we will support them reach their goals in life.

We aim to prepare our pupils for the challenges of personal, social and professional life through a school programme that provides global exposure; is smart technology driven and is compassionately delivered. In doing so, we will spot, nurse and nurture leaders of the future in all walks of life—leaders who will be men and women of strong characters with lasting personal, social, national and international values.

We believe in the uniqueness of every single learner. Therefore, we will do our best to facilitate the preservation and progression of that uniqueness. At the same time, we will identify all that is common and good in all and encourage its growth too.

When our little scholars turn young, they will have to take on the responsibilities and challenges of the adult world around them. They will have jobs and businesses to do, organisations to run, decent and dignified lives to live, certain rights to enjoy and some duties to perform even as they live in harmony with others as responsible citizens of the world. We wish to provide them such attributes, values and skills as will equip and prepare them for that certain yet so unpredictable future.

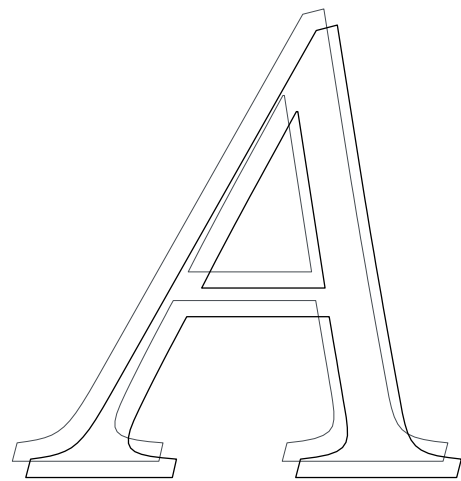
rWA is going to be a twenty-first century school for the twenty-first century kids who will have opportunities to cultivate key skills popularly known as the 6 c's—communication, collaboration, connectivity, creativity, culture and critical Thinking.

And to realize this lofty mission, we humbly seek your best wishes, trust, support and cooperation.

Thank you!

Neeraj Sharma





child's mind is among God's most wonderful creations, and it develops most harmoniously in natural surroundings. This onerous but most rewarding task requires extreme care and patience. At Rishikul World Academy, we strive to create just the right environment for this noble task.

our aim is to facilitate holistic growth of the children in our care through a sensitive, affectionate and personalized care in an atmosphere that is as natural as it can get in an urban centre. under the care of our highly trained and passionate staff, our children direct their own learning and growth in all spheres of life. our schooling programme is pragmatically learner-centred.

Located in sonapat (Ncr), Haryana and just 7 kilometres away from the Delhi- Chandigarh road, **RISHIKUL WORLD ACADEMY** is spread over an area of 8 acres surrounded by pristine natural environment. Hardly an hour's drive from New Delhi and nearly 10 KM away from **R**ajeev Gandhi education city, the academy is an ideal school for those students whose parents wish to develop their children's potential to the maximum in an atmosphere that is most conducive to a holistic growth.

We aim to train our pupils to be men and women of exceptional character that is full of discipline, dynamism, dedication and idealism. Therefore, the scholastic and the co-scholastic activities of our school programme are so designed as to encourage eager participation of all the learners in the mammoth task of instilling in them sound personal, social, national and international values that will shape their character and personality accordingly. We also aim to see them grow into young men and women who possess sound mental and physical health.

The choicest fruit of knowledge that our culture and traditions yield is brought to its 'mellow fruitfulness' in the twenty-first century environment.



Mission

To be a flagship school that others would like to emulate.

Vision

To provide world class education in a world class school for world citizens.



Core Values

One World, One Humanity

The world is a veritable museum of diversity – civilizations, nationalities, ethnicities, identities, faiths and cultures but that diversity is strung together by the unifying thread of universal humanity and a single cosmic force that created them all.

Dignity, Honour and Integrity

When individuals live a life of dignity, honour and integrity, peace and harmony prevail in the world.

All round Excellence

excellence is the key to evolution. every individual must strive to achieve excellence in all walks of life in their own way and at their own pace.

Enlightenment and Empowerment

The purpose of all edu-

cation is to enlighten and empower individuals and through them the entire humanity

aFFiliation

We propose to affiliate the school with the central Board of secondary education, New Delhi. It will strictly conform to the curriculum specifically laid down for the 10+2 pattern of education.

staFF

The school has a team of well-qualified, experienced and innovative teachers who are supported by an equally competent team of non-teaching, administrative and support staff members.

The teacher-taught ratio will always be best in the area.

twenty-First Century inFrastruCture

The school has a state-of-the-art infrastructure that is necessary for a twenty first century school. Learning in the well-equipped laboratories of Physics, chemistry, Biology, Mathematics and Geography will be a unique experience. In order to develop creativity, skills, scientific outlook and temperament in students and encourage the spirit of quest, innovation, discovery and invention in them, the school has established a science Park, a skill Development centre and an Innovation and Design Lab.

language labs

english and Hindi language laboratories have been established to develop communication skills, including public speaking,

of our learners.

our digital english Language Lab is fitted with ultra-modern audio-visual systems. Its authentic materials and software of natural english provide excellent training in accent neutralization and correct pronunciation, including stress and intonation.

Here the learners can prepare and practise for AsL and various international examinations of english.

Nevertheless, at rWA, we believe the real language lab is the world in which our children communicate in real life situations.

bio-DiVersity Park

This is an age of ecological awareness and conservation. to make the learners value the importance of flora and fauna in human life and make them respon-

sible users of eco-systems and natural resources, the school has established a bio-diversity park which consists of a spacious Green House and a chain of aesthetically designed Botanical Gardens.

This great facility will make the study of Biology, Botany and Horticulture a rewarding experience for our learners.



Sustainability Initiative

The school takes special pride in having the most modern facilities for harvesting rainwater, treating sewage, recycling waste and utilizing solar energy. The campus makes use of Green Technology and the school curriculum includes practical concepts of sustainable eco-friendly practices.

Computer & Technology

This is a digital age driven by computers and Information technology. Keeping this in mind, we have made all possible arrangements to provide updated and useful computer and IT knowledge and skills to our learners, including the skills of coding, application development, games development through the latest computers that are networked, secure and Wi-Fi enabled.

We envisage a learning environment that will be fully digital and gadget

driven soon and we are all geared to adopt that change. our top priority is to make our learners highly techno-savvy so that they are on a par with any international school student in the world.

The school has launched facilities for videoconferencing, interactive smart screen and boards, biometric, sMs alerts, and online lessons.

All these facilities, however, will not replace a real human teacher.

Library

The school library is a temple of learning where knowledge is stored in thousands of books, both printed and digital. scores of newspapers and magazines are there to keep our learners abreast with the latest news and other developments in the world. of course not all books are meant for adding to their knowledge alone. Many are there just to provide pleasure and entertainment and many more are there to make them better human beings. Then there are books that help them

prepare for success in examinations.

At present, the library is sufficiently equipped with a wide variety of rare books, encyclopaedias, journals and reference material. It has a rich collection of more than 10000 standard books, 20 periodicals, a great number of e-books, plenty of atlases and a large number of educational audio-video DVD's on diverse subjects for in-depth studies.

In addition to the study material book fairs, meet and greet events, storytelling events, creative writing

competitions and literary symposiums are held to promote love for literature, and reading for pleasure and knowledge.

Literary Club

The school has a Literary club to inculcate writing and reading habits in learners and teachers as well. And to promote creative writing, the school publishes a quarterly newsletter that serves both a literary magazine and a chronicle of school activities.





Guidance And Counselling

to assist adolescent pupils to identify and exploit their hidden potential to the optimum, the school provides timely and competent Guidance-cum- counselling by professionally qualified career counsellors, who assist them in making realistic educational and vocational choices as per their aptitudes. Apart from this, a psychologist also helps the students to overcome their personal as well as interpersonal issues in a compassionate and confidential manner.

Continuous Personal Professional Development

The school frequently organizes motivational talks, seminars and workshops for teachers to hone and update their pedagogical skills and knowledge on a continuous basis.

Many of these events are held to keep our teachers motivated, inspired & focussed.

The aim is to help them find out the latest trends, methods and materials in effective teaching and learning as practised in the world, especially in countries such as Finland, Switzerland, USA, UK, Australia, Germany, France and Canada.

Teachers are encouraged to be as autonomous as possible. Each of them gets plenty of opportunities to develop and showcase their leadership abilities and acumen.

Personality development and memory enhancement programmes are also organised for teachers as well as students.

learning by Fun

The Pre-Primary and the Primary Wings especially lay a significant stress on the activity-oriented education, which transports the kids away from the world of traditional classrooms into a world of creativity and self-assertion. It revitalizes their potential and

Awards and Scholarships

To encourage a healthy spirit of excellence, individual and team awards are liberally given to the outstanding students for winning laurels in scholastic and co-scholastic activities. Scholarships are also given to the meritorious students as well as the students who belong to the economically weaker sections of the society.

ensures that more and more learning takes place and the knowledge and wisdom thus accumulated is assimilated.

The school provides A-grade creative recreational facilities that include the Kids Kingdom, a swings Park and a creativity Hall for entertainment of the kids.

FunCtions

Besides all the International Days, the school celebrates the Independence Day, Republic Day, Gandhi Jayanti, Alumni Meet, Teachers' Day and the children's Day.

A sports Meet is also held

annually for identifying and training budding athletes and sportspersons of the future.

Moreover, a range of activities and functions are held at the class level also in which all the students take part.

The aim is to cultivate a spirit of national integration and international understanding and cooperation.





Amphitheatre & Auditorium

The school has a tastefully designed and spacious amphitheatre that can accommodate more than 500 guests.

The school also has a fully air conditioned Auditorium with proper acoustics for all indoor functions, events and meets.

Games and Sports

The school attaches great importance to the physical fitness of its students by

encouraging their willing participation in sports.

For this purpose, we have established indoor facilities of international standards for swimming, Basketball, Badminton, table tennis, shooting and squash. Facilities also exist for Football, Volleyball, skating, Lawn tennis and shooting to cater to the different sporting preferences and needs of our budding sports stars.

That is not all. The school also has an inter-

national level gymnasium with wooden floor for indoor games like Judo, Gymnastics and Aerobics.

Staff Apartments, Guest House & Suites

The school offers well-furnished staff Apartments to the families of teachers and other staff members. Besides this, the school also has an ultra-modern Guest House along with several suites for the visiting eminent dignitaries and guests.

School Cafeteria The school cafeteria provides hygienically prepared nutritious refreshment at reasonable prices. The cafeteria has well-designed and landscaped indoor and outdoor sitting facilities for comfortable dining.

Educational Tours

The school periodically organizes concessional educational trips to the well-known monuments and museums across the country and abroad to

broaden the mental horizons of its students.

It also holds regular exchange programmes with various schools of Europe, North America and Australia.

Admissions

The academic session is from the 1st April of a year to the 31st March of the following year.

An advance registration is compulsory for any new admission to the school.

Admission fee is to be deposited within a week of the Admission Assessment, failing which the admission shall stand cancelled and the seat shall be granted to the next student on the waiting list, if any.

Mere registration does not guarantee admission. Admission chiefly depends on the Personality Assessment and the combined Assessment of English and Maths to judge the suitability of the pupil for a particular class.

The school Authority reserves the exclusive right to decide the class to which a pupil can be admitted.

Documents required For admission

Proof of the Date of Birth from the Municipality or any other competent authority

Mark sheet of the previous class

sLc/ tc issued by the school last attended

Aadhar card and a Proof of residence.

Migration certificate, if any

school/Board registration card, if any

six copies of the passport-size photographs of the child and one photograph each of the parents

Note: Particulars of a child will remain the same as mentioned in the sLc issued by the previous school and the birth certificate.

Particulars of a child will remain the same as mentioned in the sLc issued by the previous school and the birth certificate.

Particulars of a child will remain the same as mentioned in the sLc issued by the previous school and the birth certificate.

Particulars of a child will remain the same as mentioned in the sLc issued by the previous school and the birth certificate.

Particulars of a child will remain the same as mentioned in the sLc issued by the previous school and the birth certificate.

Particulars of a child will remain the same as mentioned in the sLc issued by the previous school and the birth certificate.

Removals and Withdrawals

The school reserves the right to cancel the admission of a student whose performance and progress in studies are unsatisfactory or whose conduct is detrimental to the interest and prestige of the institution.

A student who fails in the same class twice will automatically be removed from the rolls of the school.

Any student caught using unfair means during an examination will not be retained on the school rolls.

In case a student stops attending the school without any prior information to the school authorities, his/her name will be struck off the school rolls after six consecutive days of absence.

Parents are required to give one month's advance written notice to the school

Parents are required to give one month's advance written notice to the school

Parents are required to give one month's advance written notice to the school

Parents are required to give one month's advance written notice to the school

Parents are required to give one month's advance written notice to the school

authorities for the withdrawal of their children.

The transfer certificate will be issued only after the school's dues have been cleared for the complete academic session.

The decision of the Principal/school management/academic council in the matter of promotion will be final and binding on the students and their parents.

Curriculum

The school shall prepare students for the All India Secondary School Examination and All India Senior School Certificate Examination, conducted by the CBSE, New Delhi, in Science, Commerce and Humanities streams only.

School Rules

1All the students on the school rolls as well as their parents/guardians are expected to sincerely observe all the rules and regulations of the school which may be enforced and/or modified from time to time. In case of a dispute, the decision of the school management will be final and binding on them.

2Throughout his/her stay in the school, a student will be governed by the strict code of Discipline of the school

3A minimum of 75% attendance is a must for promotion to the next class

4every student shall always carry the Identity card with him/her for the identification purposes

5students' participation in all the functions and activities of the school is compulsory

6All the students shall

converse in English on the school campus

7All the students shall strictly follow the school dress code.

8Any damage to the school property, caused by negligence or mischief shall have to be compensated by the defaulters. The quantum of such damage done shall be determined by the school management for the purpose of compensation.

9Possession of any unauthorized and unlawful material is strictly prohibited on the school campus and may result in permanent removal from the school.

10Smoking and consumption of alcoholic drinks on the premises of the school are strictly prohibited. Any violation of this rule can invite expulsion from the school

11Fine will be imposed

on the students for violating the school norms e.g.- coming to school late or without wearing the prescribed uniform, not bringing books and notebooks, causing any damage to the school property and remaining absent without due information and permission and using foul or derogatory language or bullying.

12An act of indiscipline may lead to expulsion of the child from the school

13No student is allowed to come to school by bike or by car in case he/she does not possess a valid driving licence for geared as well as non-geared vehicles.

14change of subject and sections is not permissible in any case

15In cases of emergency and for appointment with the school authorities, parents must reach the school

as soon as possible after receiving the information.

16If a child's name is struck off the school rolls for any reasons and he/she re-joins the school/hostel, recreational or sports clubs, etc. in an academic year, he/she will have to pay readmission charges along with fee for the gap period.

17The school shall not be responsible for any mishap on account of any natural calamity like earthquake, flood, fire, etc.

18The school shall also not be responsible for any mishap resulting out of students or parents' negligence.

19Training in disaster management is compulsory for all students.

20The school shall not be responsible for any injury received by the student while undertaking any academic or co-curricular

activity in or out of the school e.g. Practical exam, sports, trips & tours, Horse riding, swimming etc. nor shall it bear any expenses incurred thereupon.

21Parents are advised to get Medical Insurance for their wards.

22The school rules can be modified at any point during an academic session without any prior information and these modified rules will be applicable to all old and new admissions.

23The parents shall bear all the expenses of correspondence and phone calls made to them on behalf of their child by the school authorities.

24Persons carrying arms or harmful substances like explosives, inflammable materials and acids shall not be allowed to enter the school premises in any case. Medical and laboratory

supplies are exempted.

25Aptitudes, capabilities and interests do vary from person to person. Hence, a child's academic performances should never be compared with that of others.

26All disputes shall be subject to the jurisdiction of Sonapat, Haryana only.

27The school shall not be responsible for any loss or damage to any board documents if they are not collected from the school office within three months from the date of issue by the board

28The school does not recommend any private tuition, coaching, etc.

29The parents must confirm the reliability of the outside transport provider before arranging any such transport for their child. The school shall not be responsible for it in any case.

Fee rules

▪ Fees are to be deposited on the quarterly basis by 2 pm on working days only. The details are as follows:

Quarter	Months	Last Date	Quarter	Months	Last Date
First	April-June	10 April	Third	October-December	10 October
Second	July-September	10 July	Fourth	January-March	10 January

▪ Any delay in depositing the fee will entail a fine of rupees 20/- per day for 15 days. Beyond this, it will result in the automatic removal of the student's name from the school rolls

▪ Expenses on clothes, books, stationery, maintenance of personal belongings, transport facilities, participation in extra-curricular activities, etc. will be borne by parents

▪ Fees can be paid in cash or through a D.D./an Accounts Payee cheque drawn in favour of **rishikul World Academy, Sonapat**

▪ Fee once deposited is neither refunded nor adjusted in any case

▪ Fees are charged from April irrespective of the date of admission

▪ Parents should collect the receipt for every payment of fee and other miscellaneous charges they pay to the school through any means.

▪ The school fee will be charged for the entire span of twelve months irrespective of the date of admission to the school

▪ The school and transport fees are charged for the entire span of twelve months but realized in four quarterly instalments. If a child stops availing transport facilities in between a session he/she will have to pay fee for the whole year



Rishikul World Academy
devru road Sonapat (nCr), Haryana
an english Medium Co-educational School
0130 2233074, 2234074, 7027766661/2/3 ▪ rwasonapat@gmail.com

Rishikul Vidyapeeth
Sonapat (nCr), Haryana
0130 2222274, 2221274 ▪ rishikulsnp@gmail.com

Rishikul Vidyapeeth alipuR delhi
9643034586 ▪ rishikulvidyapeeth36@gmail.com

www.therishikul.edu.in